

1 Introduction

This chapter mainly introduces H6 product appearance and accessories. The product appearance includes panel, keyboard and interface.

▪ 1.1 Panel

1.1.1 Front side of H6

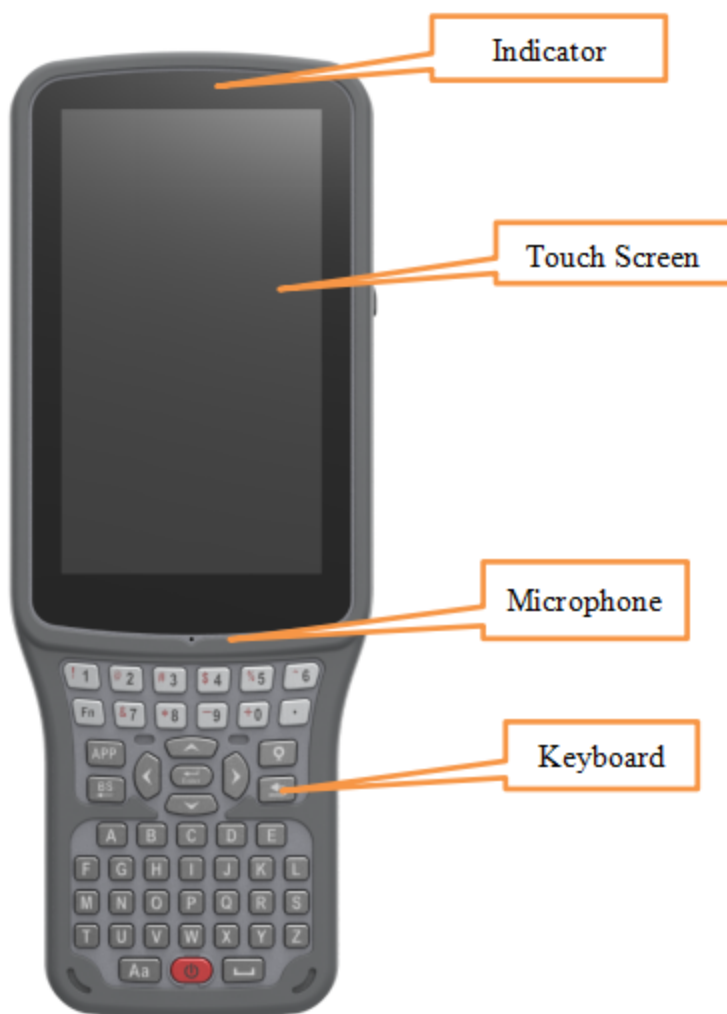


Chart 1-1 Function description of the front component of the controller

Component	Description
Indicator Light	Charge state lamp
Touch Screen	Capacitive screen, multi touch, wet hand touch, support active capacitive pen and glove touch
Microphone	The built-in microphone can be used for on-site collection of

	voice information
Keyboard	Switch on / off, direction control, Chinese and English switching input, data acquisition and other functions

1.1.2 Back side of H6



Chart 1-2 Function description of the back component of the controller

Component	Description
Flash lamp	Support photo taking and flashlight function
USB Interface / SIM Card Slot	Standard type-C interface and nano SIM card slot
Hom	Real time voice broadcast of instrument operation and status
Camera	Be used for on-site acquisition of image information
NFC	Support NFC data transmission function and realize intelligent pairing between RTK and hand
Bracelet	Strengthen handheld stability
Strap Buckle	Fixed hand strap

• 1.2 Keyboard

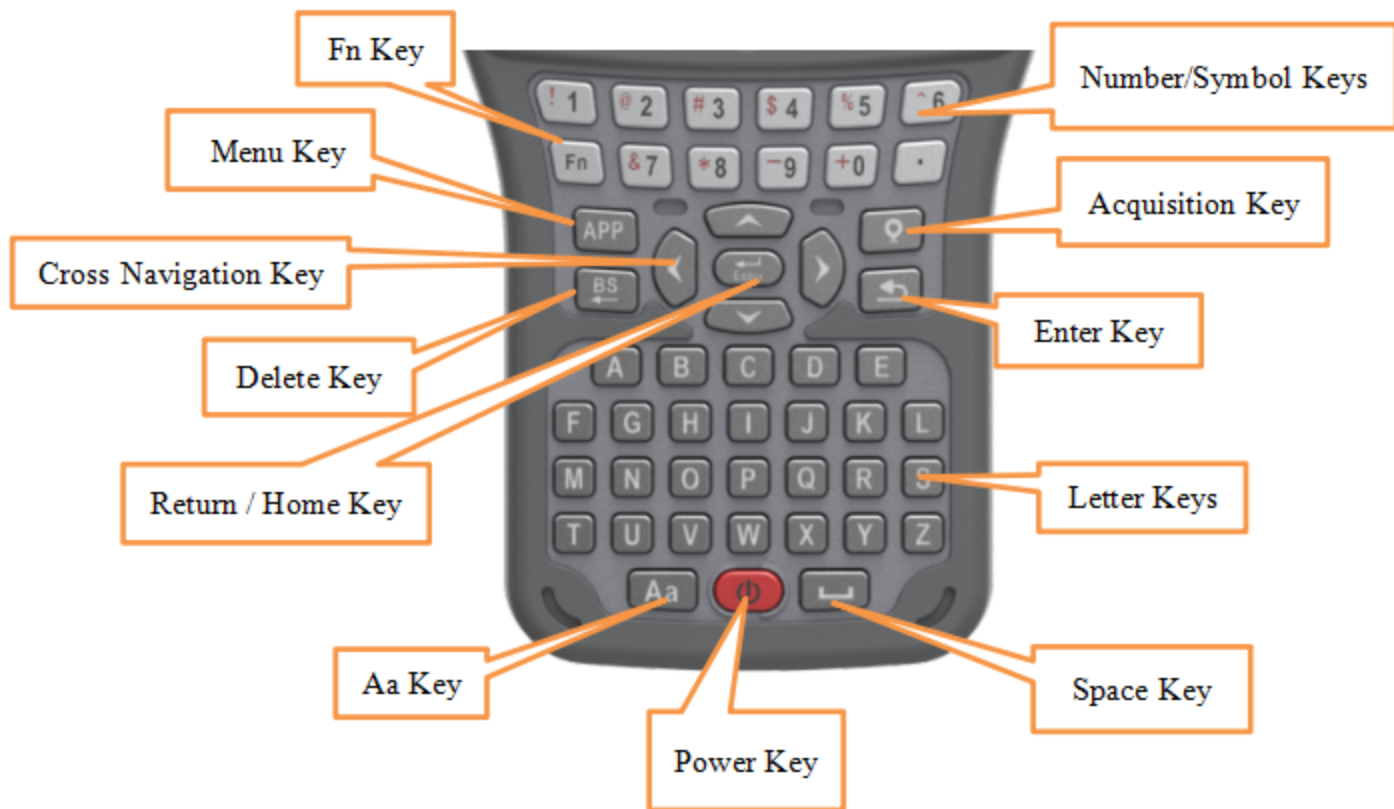


Chart 1-3 Function description of keyboard

Component	Description
Fn Key	Switch between numbers and symbols. Press the power key + FN combination key when starting up to enter the brush interface
Menu Key	Long press to enter the background menu
Cross Navigation Key	Up, down, left and right direction keys
Delete Key	Backspace delete
Return/Home Key	Return to the previous page or long press to return to the main page of the manual
Aa Key	Input method case switching
Space Key	Input space
Enter Key	Confirm send operation
Acquisition Key	Manual data acquisition
Number/Symbol Keys	Press FN to switch between numbers and symbols
Letter Keys	English input
Power Key	Start / close the handheld controller and turn off the screen (double click to quickly screenshot, press and hold for 8 seconds to forcibly restart the machine)

• 1.3 Accessories

Charger



Charger: 5V—1.67A/7V—1.67A/9V—1.67A Model: L003IT-016C

Data line



USB data line: Connect with the USB port of the computer for data transmission.

Connect with USB port of charger for charging the handheld controller.

• 1.4 Handheld Controller Charging

1.4.1 Battery

H6 handheld controller adopts built-in 9200ma high-capacity lithium battery without installation and disassembly.

1.4.2 Charge

A special charger should be used to charge within a certain temperature range and a certain charging time is required.

Specific usage and requirements: the special charger standard for H6 should be used. When you use it for the first time, there is still a certain amount of electricity in the battery. You should use up the electricity before charging. H6 supports fast charging, but the original charger must be used, and the charging time is less than 4 hours. If the battery is not used frequently, it must be charged once every two months.

▪ 1.5 Handheld Controller Application

1.5.1 SIM Card Installation

This handheld support dual SIM cards, default SIM1, SIM1 and SIM2 both support whole network 4G(5G).



SIM card installation steps:

1. Open the dust-proof rubber pad on the side of the manual and leak out the SIM card slots.

Slot1 and slot2 both adapt Nano-Sim card (small card).

2. Put the SIM card into the card slot, and the chip of the SIM1 card is inserted downwards (SIM2 upward) into the slot. After the insertion reaches the correct position, the buckle will make a slight locking sound. On the contrary, when pulling out the SIM card, gently press the SIM card first. When the buckle makes a slight unlocking sound, you can pull out the SIM card.

1.5.2 on/off operation

1. shutdown status, long press the power button for 3 seconds, and the handheld controller vibrates at the same time to start the machine.

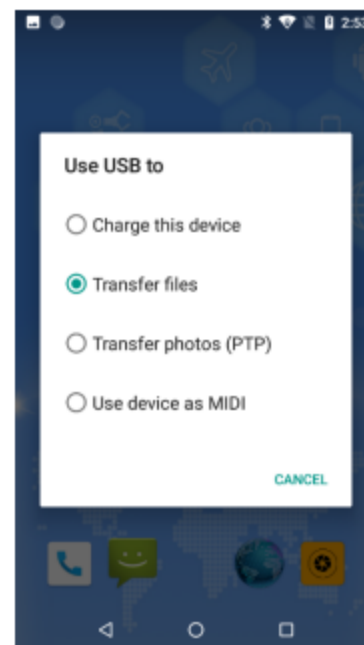
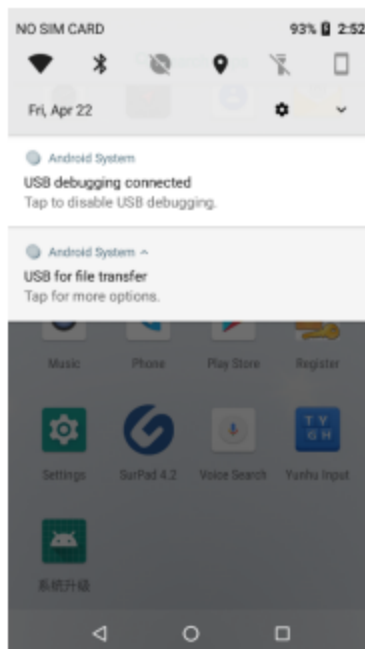
2. In the power on status, long press the power button for 3 seconds to prompt for shutdown confirmation, and then click "Power off".



1.5.3 The connection between handheld controller and PC

1. Connect H6 and PC by USB data line.

2. Transfer files: Drop down screen top menu, click (USB for file transfer), select (transfer files).



1.5.4 Typewriting

1. During the use of Typewriting, there are mainly two switching keys, Fn and Aa.
2. The typewriting is set successfully. During the process of using the typewriting, each time a new input dialog box is opened, the default current state of the typewriting is digital state and lowercase letter state.
3. Fn key and its functional requirement: click Fn key, switch numbers to characters and cycle them in turn.
4. Aa key and its functional requirement: click Aa key, switch from lowercase letters to uppercase letters, then click Aa, switch from uppercase letters to Chinese, and then click AA to return to lowercase letters, and switch in turn.
5. Up, down, left, right and enter to select and confirm the input.

▪ 1.6 Bluetooth connection

Method 1: Bluetooth touch connection

G30pro supports NFC Bluetooth pairing function. Put the back of the H6 (NFC reading module is on the back of the H6) close to the G30pro, and the handheld controller will automatically complete Bluetooth pairing. Then you can open the SurPad for measurement related work.

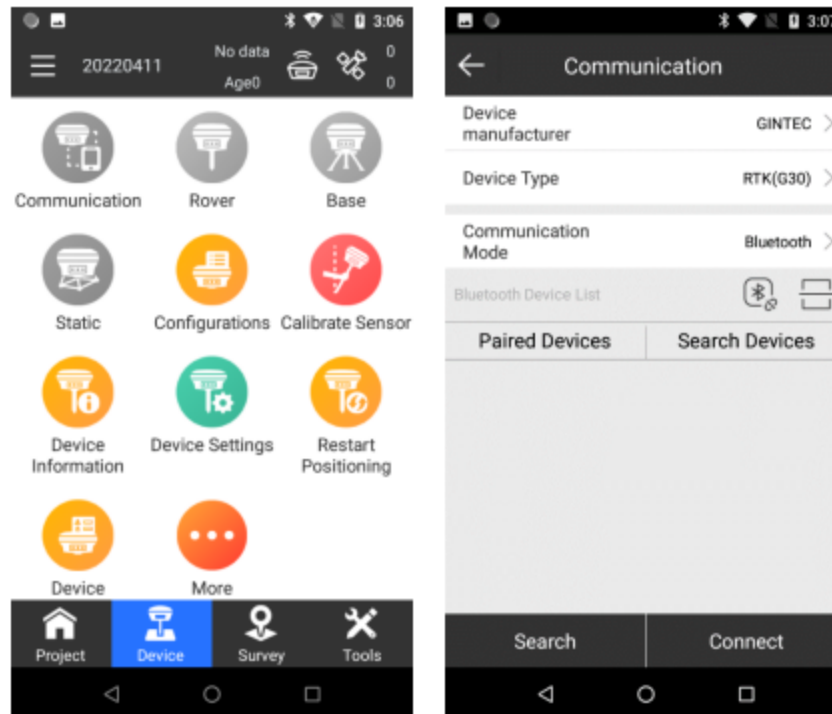


Method 2: Bluetooth connect by SurPad

You need to turn on the device, and then perform the following operations on the H6.

1. Turn on SurPad, click “Device” → “Communication” .

2. Select correct Device manufacturer and Device Type, and then select Bluetooth in Communication Mode.

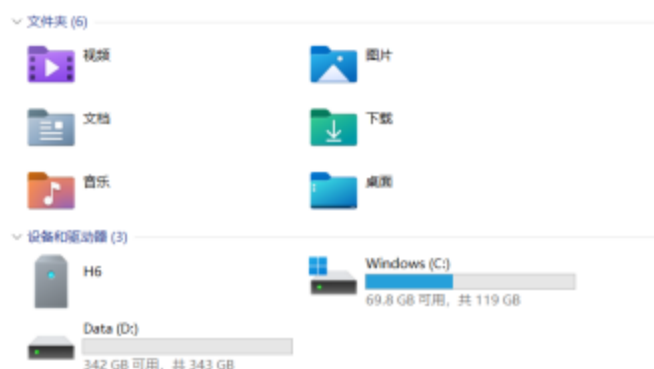


3. Click Search, you can search for nearby Bluetooth devices.
4. Select the device to be connected and click Connect to connect to Bluetooth.

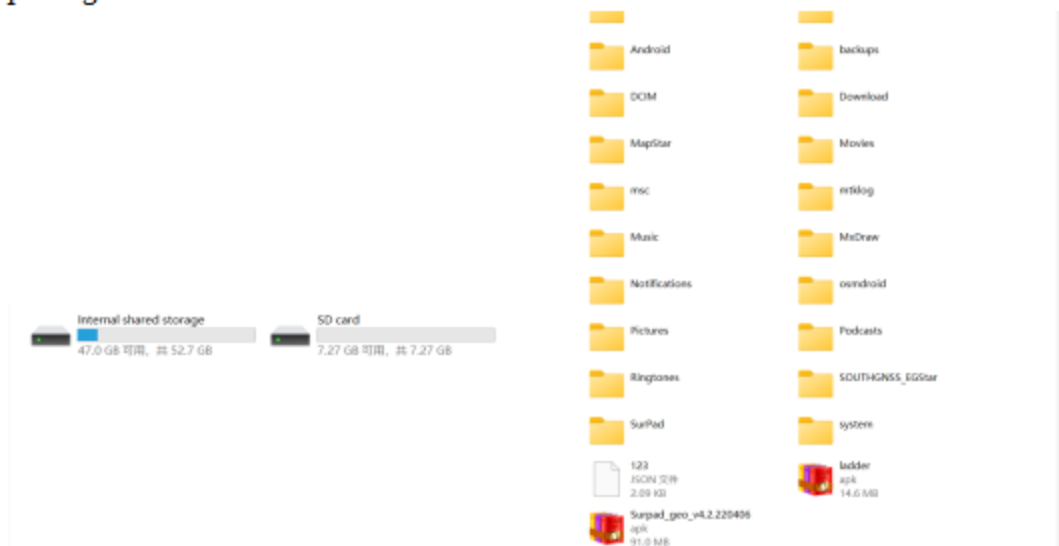
1.7 SurPad software installation

Step1: Connect H6 and PC by USB data line, and drop down screen top menu, click (USB for file transfer), select (transfer files).

Step2: Enter Drive Management on the computer, and click H6.



Step3: Click “Internal shared storage”, and then drag the SurPad installation package to the bottom.



Step4: Turn on the handheld controller, click “File Manager” from APP interface, and then click “Internal shared storage”, and find the installation package at the bottom and click Install.

